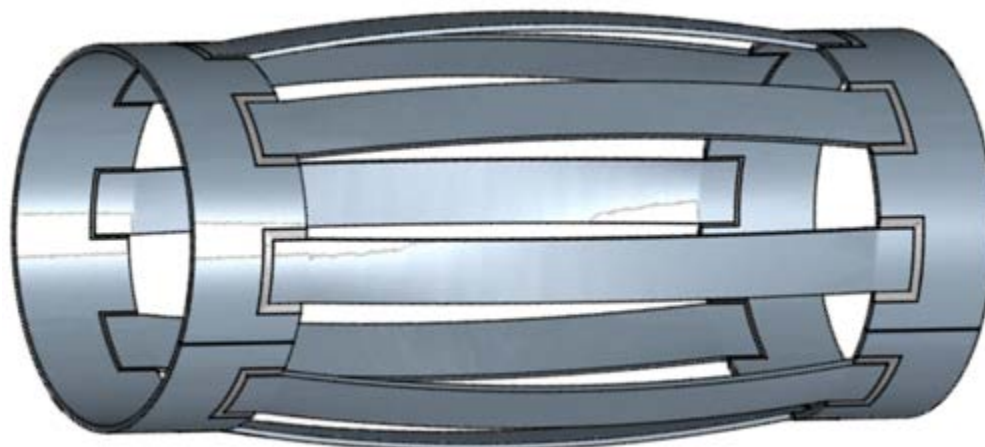


8.625 in. Expandable Centralizer Specifications



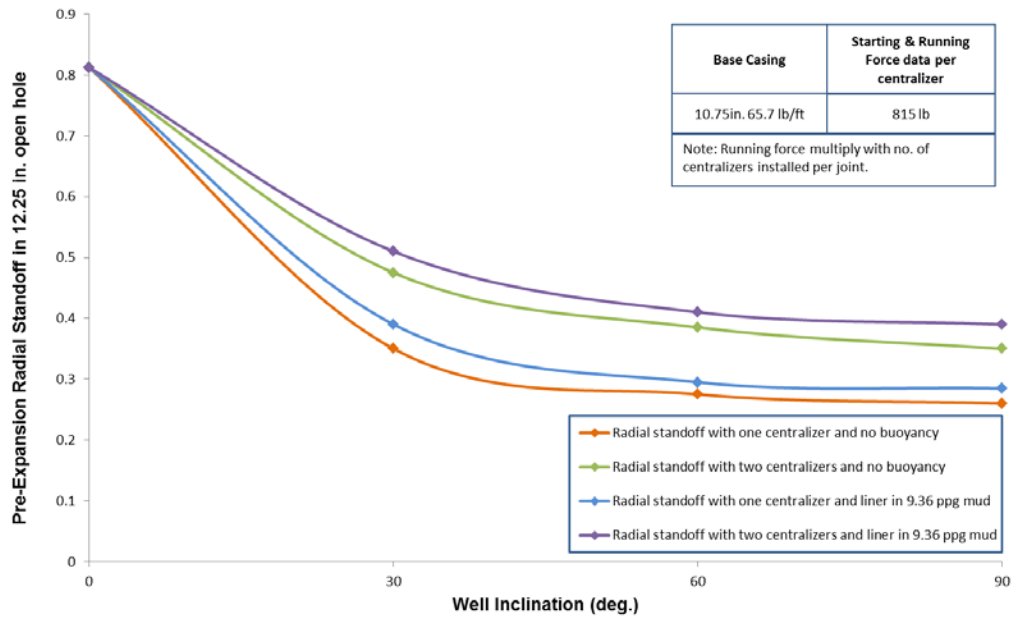
Centralizer Parameter	Base Casing Range
	10.75 in., 55.5 – 71.1 lb/ft
External bow diameter*	10.25 in.
Maximum external bow diameter (fully-compressed)	9.211 in.
Bow wall thickness*	0.156 in.
Maximum centralizer length	22 in.
Maximum centralizer length (fully-compressed)	25 in.
Maximum external diameter of end bands	9.073 in.
Length of each end band	3 in.
Force and Stand-off data	See Chart
Stop Collars	
Maximum external diameter	9.216 in.
Length of each stop collar	2 in.
Number of set screws per stop collar	10
Recommended set screw torque	25 ft-lb
Force required to drag stop collar on the liner	20,000 lb
Minimum spacing length between two stop collars	28 in.

* There may be slight, yet acceptable, variances in these product parameters.

Enventure Global Technology

15995 North Barkers Landing, Suite 350 | Houston, Texas 77079
 Tel 281.552.2200 | Fax 281.552.2201 | www.EnventureGT.com

**Centralizers for 8-5/8 in. 32 lb/ft SET with 3-1/2 in. 13.3 lb/ft inner string
Radial Standoff Vs. Well Inclination**



**Centralizers for 8-5/8 in. 44 lb/ft SET with 3-1/2 in. 13.3 lb/ft inner string
Radial Standoff Vs. Well Inclination**

