

Case Study

First SET[®] Openhole Liner in Kazakhstan Enables Well Deepening

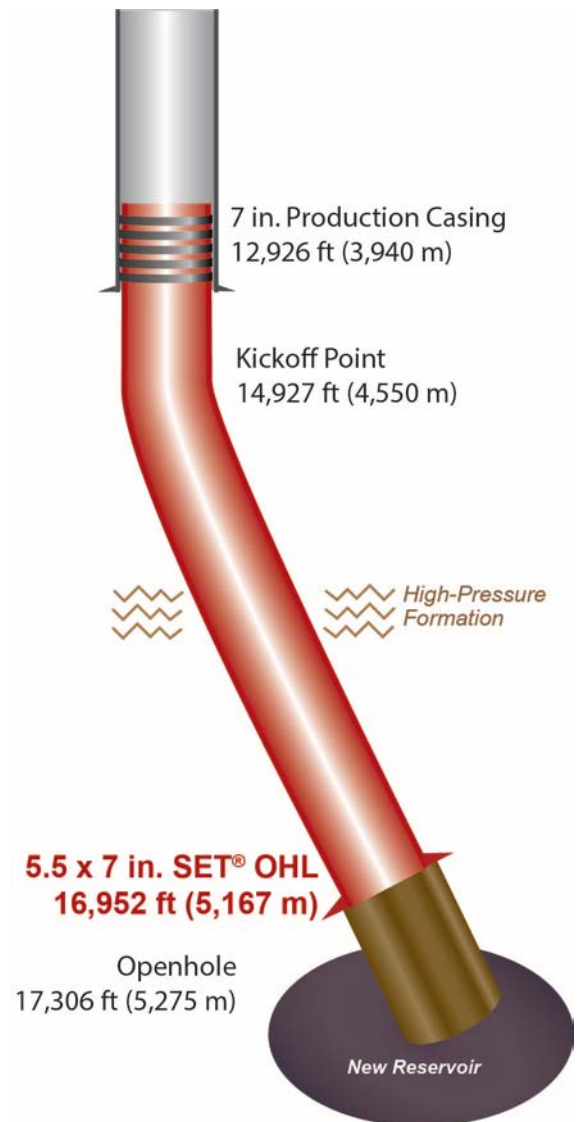
Challenge

An Operator planned to maximize production in a 30+-year-old well by directionally deepening the well to intersect an undeveloped reservoir. The well was originally drilled vertically to 14,599 ft (4,450 m) with 7 in. casing set at 12,926 ft (3,940 m). The well deepening objective was to directionally drill from a kick-off point in the open hole at 14,927 ft (4,550 m), through the target reservoir, TD at 17,306 ft (5,275 m), while maintaining maximum wellbore diameter to maximize production from the new reservoir. In order to achieve the objective, a high-pressure formation above the new target needed to be isolated. To cover this high-pressure formation and maximize wellbore diameter, a solid expandable liner was the only option.

Added Value

After the high-pressure formation was drilled, a 5-1/2 in. SET Openhole Liner (OHL) successfully isolated the formation while maintaining maximum wellbore diameter. This allowed the planned 3.5 x 4.5 in. conventional liner to be set across the new reservoir. Utilizing SET Technology enabled the Operator to deepen the existing asset while maintaining maximum wellbore ID, meeting the objective of maximizing production from the new reservoir.

- ▶ **Completion Date:** February 2015
- ▶ **Location:** Kazakhstan
- ▶ **Well Type:** Directional
- ▶ **Base Casing:** 7 in. (32 lb/ft and 35 lb/ft)
- ▶ **Solution:** 5-1/2 in. SET Openhole Liner
- ▶ **Depth:** 16,952 ft (5,167 m)
- ▶ **Liner Length:** 4,602 ft (1,403 m)



Enventure Global Technology

15995 North Barkers Landing, Suite 350 | Houston, Texas 77079
 Tel 281.552.2200 | Fax 281.552.2201 | www.EnventureGT.com